



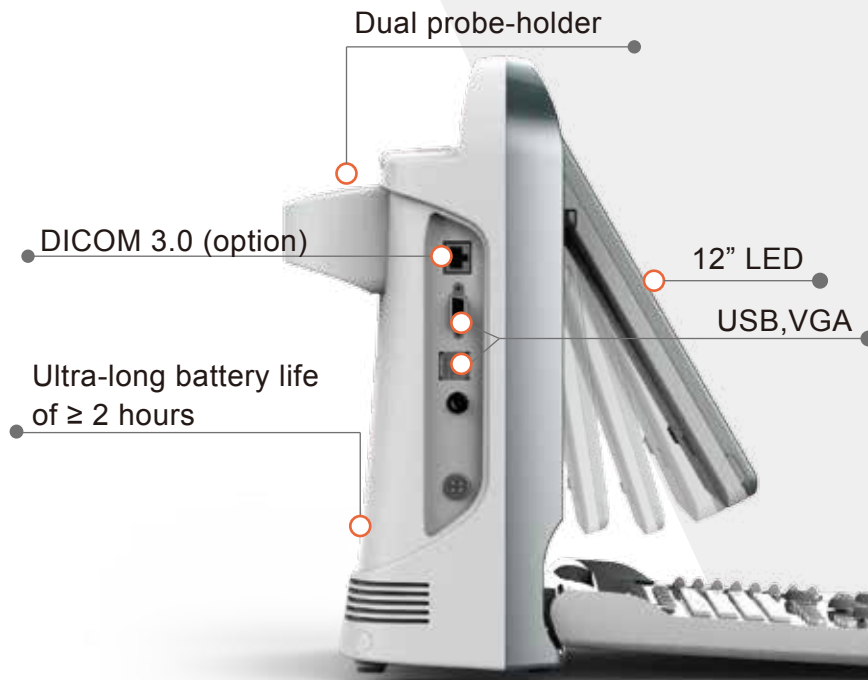
# ECO 5 VET

Ultra-Portable • Ultra-Affordable • Color doppler

# CHISON

Value Beyond Imaging

# Ultra-compact, easy to carry with your car



## Eco-friendly

- Less radiation
- Lower power consumption
- Longer life: LED



## Ergonomic

- Rotatable LED monitor (0~30°): tailor to different viewing angles
- Unique LED: reduce eye fatigue
- Keyboard design: for easy and quick access
- Easy to learn and use (6-one-key step)
- Anti-water keyboard cover (option)

## Excellent

- Full digital beam-former
- Color doppler technology
- Advanced fast frame rate technology
- Color filter
- Applications: Abdomen, OB&GYN, Urology, Vascular, Small Parts, Pediatrics, Basic Cardiology.
- Display modes: B, B/B, 4B, M, B/M, CFM, PW, Trapezoidal
- i-Image
- THI (Tissue harmonic imaging)
- SRA (Speckle reduction algorithm)
- Compound imaging



One key to  
**Full Screen**



# Efficient

- *Streamlined Workflow*

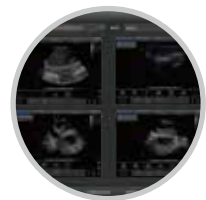
The multi-purpose user presets, comprehensive measurement & report system, built-in EasyView image archive system, quick image storage / retrieve / transfer, one-button direct print, make the complete workflow better than what you can dream of.



Various Measurements



Detailed Reports

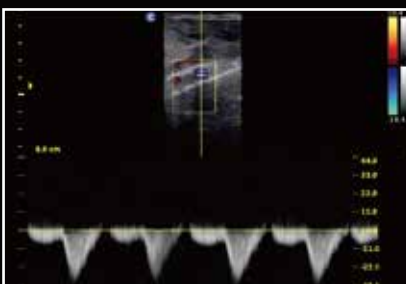


EasyView Image Archive System

- *ONE KEY*



- *Support PC Printer*



# Specifications



Applications	Large animal: Reproduction, Tendon. Small animal: Abdomen, Small parts, Basic cardiac.
Display Modes	B, B/B, 4B, M, B/M, CFM, PW
Image Technology	Compound imaging, Trapezoid imaging, Chroma, i-Image, THI, SRA
Probe Frequency	2.5MHz - 11MHz (Depend on the probe types)
Cine Loop	256 frames
Zoom	PIP zoom & pan zoom
Measurement Packages	General Measurements, Canine: GS, CRL, HD, BD. Feline: HD, BD. Equine: GS. Bovine: BPD, CRL, Trunk Diameter. Ovine: BPD, CRL, Trunk Diameter.
Archives Management	Patient information management, Patient images record, Patient exam report.
Power Supply	AC 100V-240V, 50Hz- 60Hz
Option	320G Hard disk, DICOM 3.0, Water-proof keyboard cover, Carry Case(BG-100), PC Printer, TR 9000



4.5MHz - 8.0 MHz Micro-Convex  
MC6-A



5.3MHz - 10.0 MHz Linear  
L7M-A



5.3MHz - 11.0 MHz Linear  
L7S-A



5.3MHz - 10.0 MHz Linear Rectal  
L7V-A



4.0MHz-7.0MHz Micro-Convex  
MC5V-A



2.5 MHz - 5.0 MHz Convex  
C3-A



2.5MHz-5.0MHz Micro-Convex  
MC3-A



5.0MHz-10.0MHz Trans-Rectal  
R7-A

## CHISON Medical Technologies Co., Ltd.

### Sales & Service Contact Address:

No.9, Xinhuihuan Road, Xinwu District, Wuxi, Jiangsu, China 214028

TEL : 0086-510-85310593 / 85310937

FAX : 0086-510-85310726

EMAIL : export@chison.com.cn

www.chison.com



We reserve the right to make changes to this catalogue without prior notice. Please contact us or your local dealer for the latest information.

\*Please refer to the user manual for details.